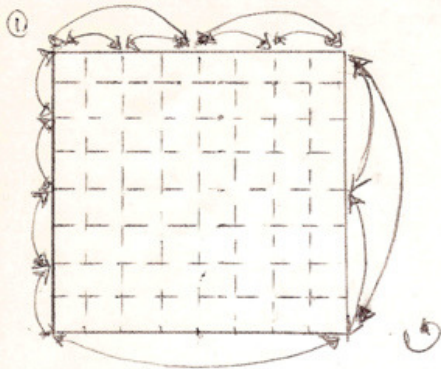
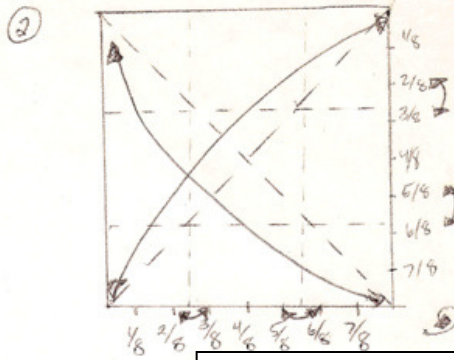


Collapsible Box (Christine Edison)  
 creative Commons Copyright

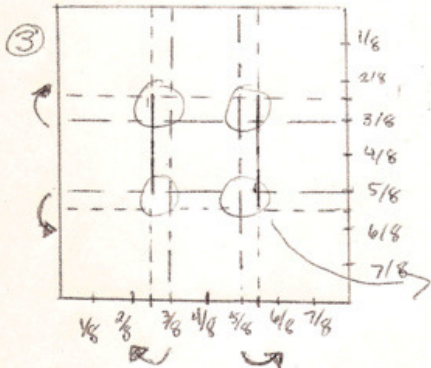


① Fold in eighths horizontally and vertically. White side up.



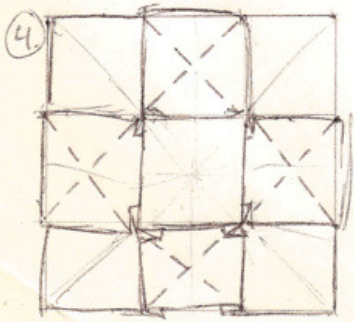
the box dimensions will be  
 sides =  $1/4$   
 height =  $1/8$

or crease at  $1/3$  each way and then at  $1, 2, 3/12$  this will produce a box that appears much larger without the annoying corner tuck at step "10"  
 sides =  $1/3$   
 height =  $1/6$

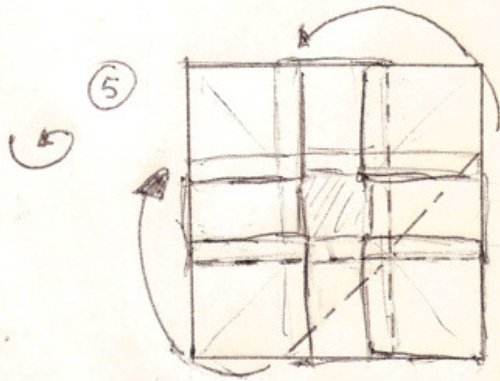


③ These will not initially lie flat. You will flatten it and have 9 equal squares.

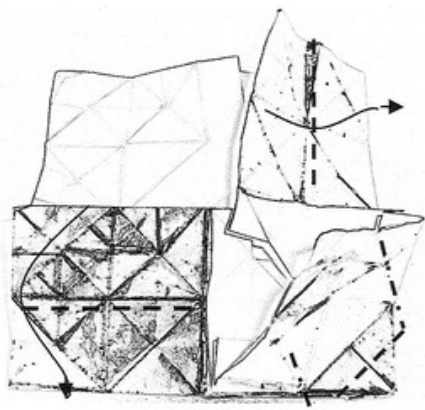
After 3D



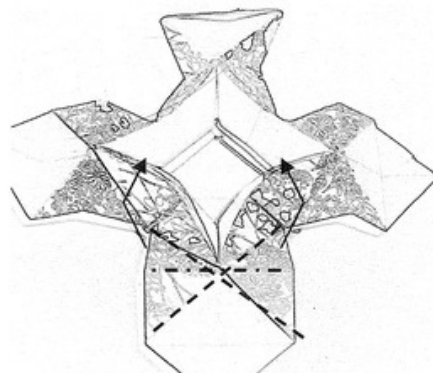
④ View after collapsed, make creases as shown.



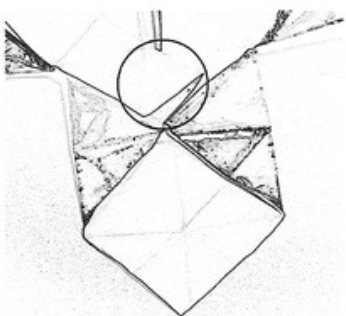
⑤ You will do this on all 4 corners.



Repeat on all four corners.



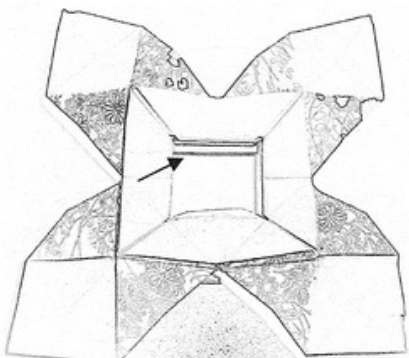
Lift up the inner square and collapse all 4 corners, tucking it under the center flaps.



Tuck under right edge (or whichever corner sticks out)



In the center fold tips under the first layer.

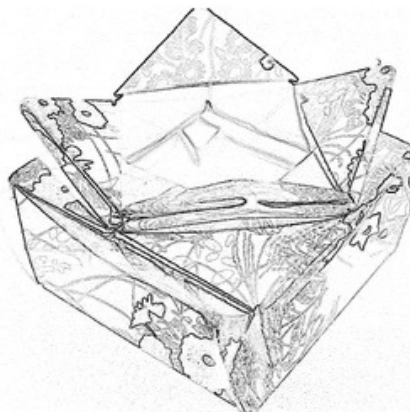


Partly lift up all four flaps.



Folding the tips under would be easier at step "9".

Fold the tips under. To enlarge the box put your finger in the center and push out the sides.



To collapse push in the sides of the box.